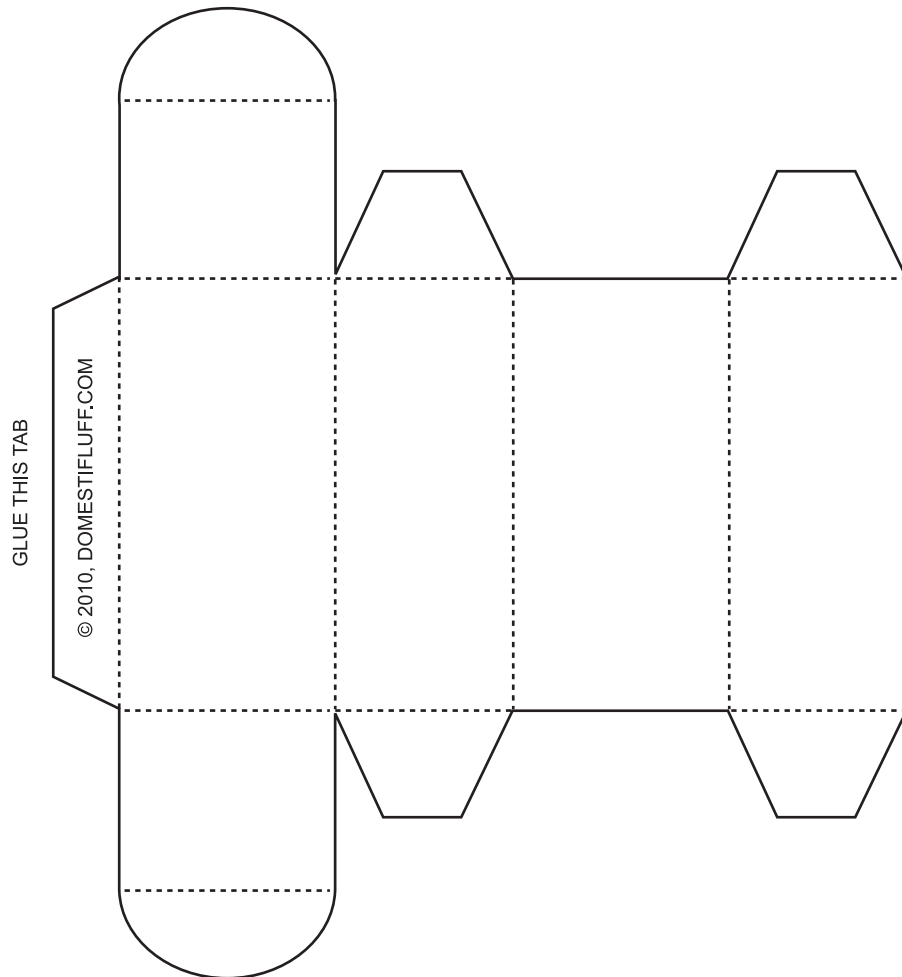


# 13 Days of Halloween,

Day #11 : Mini Treat Box



Instructions: Cut out along solid lines, and score/fold along dotted lines. Using glue dots or double-sided tape, attach the tab to the box end. Fill with treats or a small gift/favor and close top and bottom flaps.

This template is for personal, non-commercial use only.

© 2010, Kristen Magee

